

SCHOOL STAFF CAN'T BE EVERYWHERE. BUT INTELLISEE CAN.

1 IN 4
MASS SHOOTINGS
 OCCUR IN AN
EDUCATIONAL ENVIRONMENT

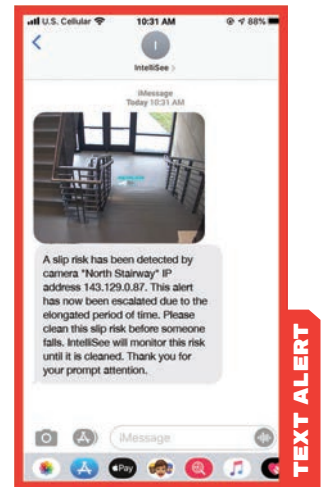
Creating a safe school environment takes a layered security approach. Video surveillance and on-site security staff are two important parts of the strategy. But these are mostly used for after-the-fact forensics, leaving your school vulnerable to incidents, injuries and property damage.

What if there was a way to proactively detect threats to keep your students, staff, and school safer? IntelliSee's active monitoring gives you situational awareness 24/7/365 even after hours or with limited staff.

GET SMARTER SECURITY WITH INTELLISEE®

IntelliSee is an AI threat detection and risk mitigation platform that adds a complementary layer of security to your existing surveillance without adding personnel or expensive upgrades. It's always on, before, during and after school hours, scanning for threats and alerting to potential hazards. IntelliSee does not store footage, personally identifiable information (PII), or use facial recognition so there are no Family Education Rights and Privacy Act (FERPA) or other privacy issues.

Through advanced AI, IntelliSee supplements your existing security strategy by providing a constant layer of unobtrusive protection. IntelliSee's real-time alerts also give your people the time to react and respond faster.



MONITOR



Simultaneously monitor existing surveillance cameras 24/7/365 to proactively detect multiple risks in real time.

DETECT



Autonomously detect drawn weapons, trespassers, no-shows, slip and fall risks, and more.

ALERT



Instantly alert your people and systems and provide situational awareness. Continue monitoring until the situation is resolved.

ACT



Free your resources to act quickly—when seconds can be the difference between an incident and a tragedy.

ONE PLATFORM, MULTIPLE RISKS

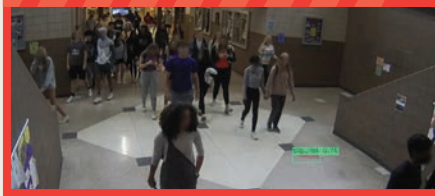
IntelliSee detects multiple risks for one flat rate.

ALERT - GUN DETECTED



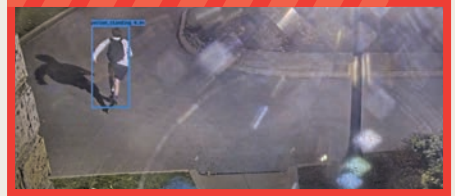
Detect drawn weapons before shots are fired to avoid a potentially catastrophic situation

ALERT - SLIP RISK DETECTED



Mitigate slip and fall risks before an incident

ALERT - TRESPASS DETECTED



Detect trespassers or loitering in specified locations, dates and times.

ALERT - FALLEN PERSON DETECTED



Respond faster to minimize severity of a claim

ALERT - VEHICLE DETECTED



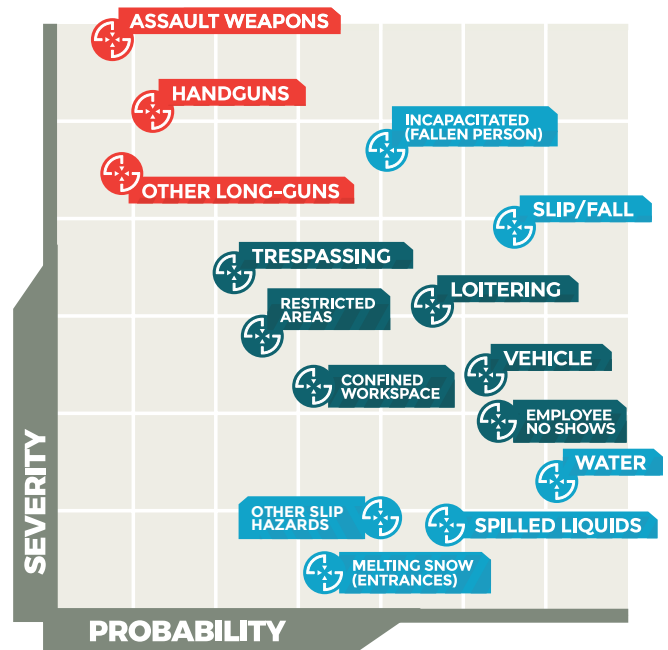
Get notified when a vehicle enters a designated 'red zone'.



THE PURCHASING COOPERATIVE AT
GREENBUSH

SMARTER SURVEILLANCE

- Enhance existing security installs without adding personnel or expensive upgrades
- Proactively address threats such as drawn weapons, trespassing, slip and fall hazards, and more with 24/7/365 autonomous monitoring
- Instant and escalating alerts speed up response
- Simple, intuitive, secure set up with customizable parameters
- Platform solution that constantly learns and improves with each upgrade



PROTECT WHAT MATTERS MOST

In a world of increasing risks, smarter solutions are needed. Proactively protect students, staff, and property with IntelliSee. **Smarter surveillance for a safer world.®**

IntelliSee.com



Stacy Menhusen
Account Executive
stacy.menhusen@swc.net
913.281.5100 Ext. 8260



Finley Turnbow
Account Executive
finley.turnbow@swc.net
314.934.4021